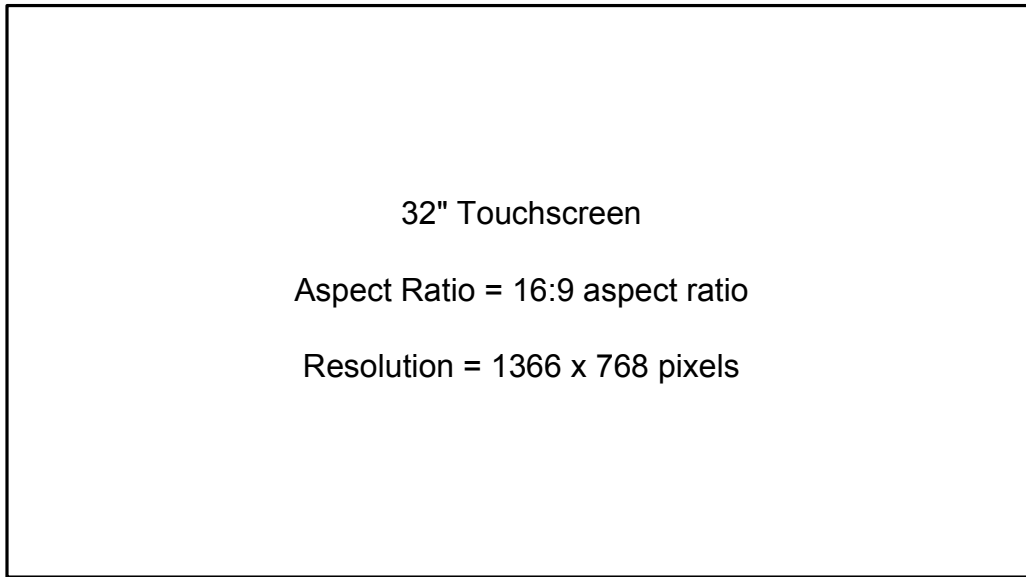
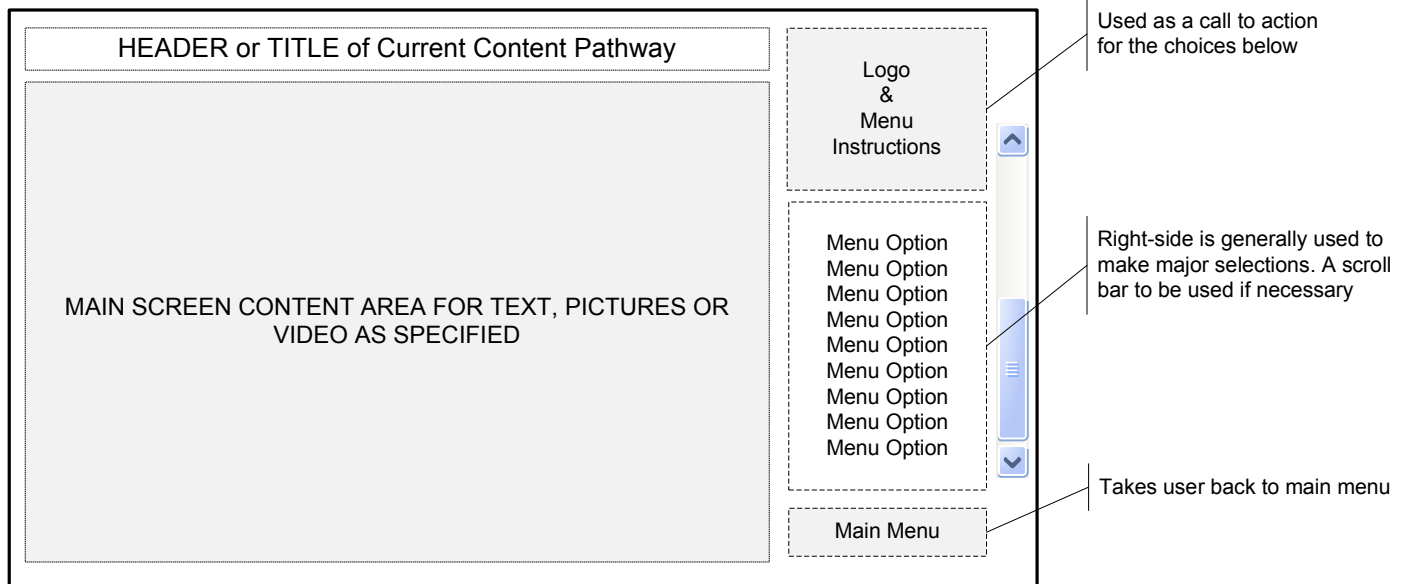


Interactive Screen Size & Aspect Ratios

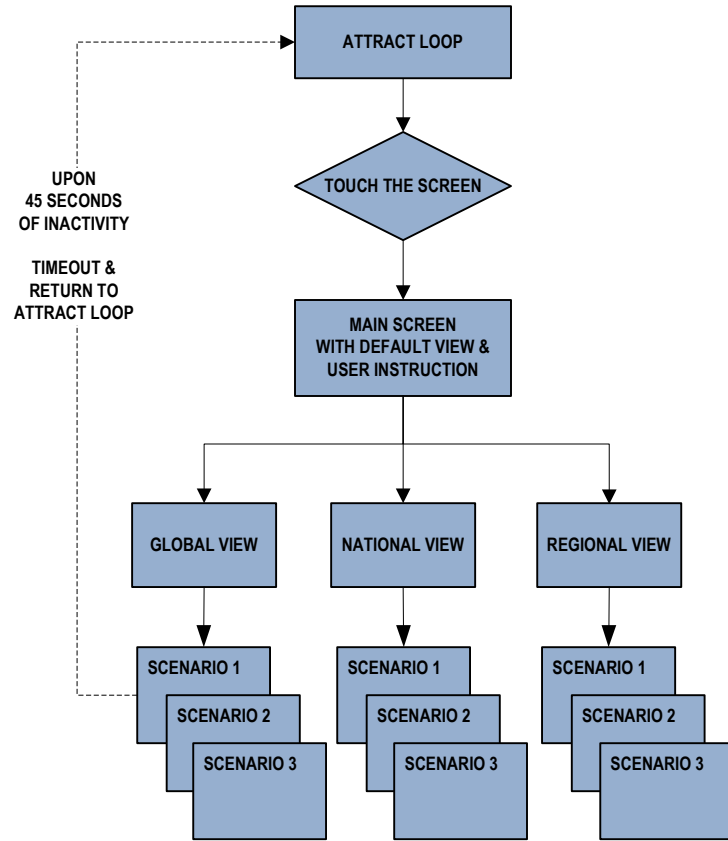


General Screen Topography



**Other Notes:**

- All interactives will have an **attract loop** (a repeating animation or series of images used to attract a user to an exhibit while in preview mode). Each attract loop will follow a similar pattern or template.
- All interactives will have usage data captured (specifics to be determined)



HEADER or TITLE of Current Content Pathway

Lorem ipsum dolor sit amet, consectetur adipiscing elit. In pharetra. Pellentesque tempus consectetur elit. Maecenas mi sapien, vulputate in, ultrices at, feugiat non, ante. In eu tellus. In hac habitasse platea dictumst. Nam fermentum sodales sapien. Nullam ut turpis faucibus lacus consequat laoreet. Etiam iaculis, metus eu viverra venenatis.

Main Menu

**A**

Text provides an overview of the interplay of people, place and prosperity that leads to sustaining a dynamic balance etc.

User chooses 1 of 9 highlighted scenarios that have either a global, national, or regional view (lens)

HEADER or TITLE of Current Content Pathway

Logo & Menu Instructions

Scenario 1  
Scenario 2  
Scenario 3  
Scenario 4  
Scenario 5  
Scenario 6  
Scenario 7  
Scenario 8  
Scenario 9

Main Menu

**B**

In this example, the user has chosen to look at topics that will have a national focus

Navigation to other scenarios

HEADER or TITLE of Current Content Pathway

Logo & Menu Instructions

Scenario 1  
Scenario 2  
Scenario 3  
Scenario 4  
Scenario 5  
Scenario 6  
Scenario 7  
Scenario 8

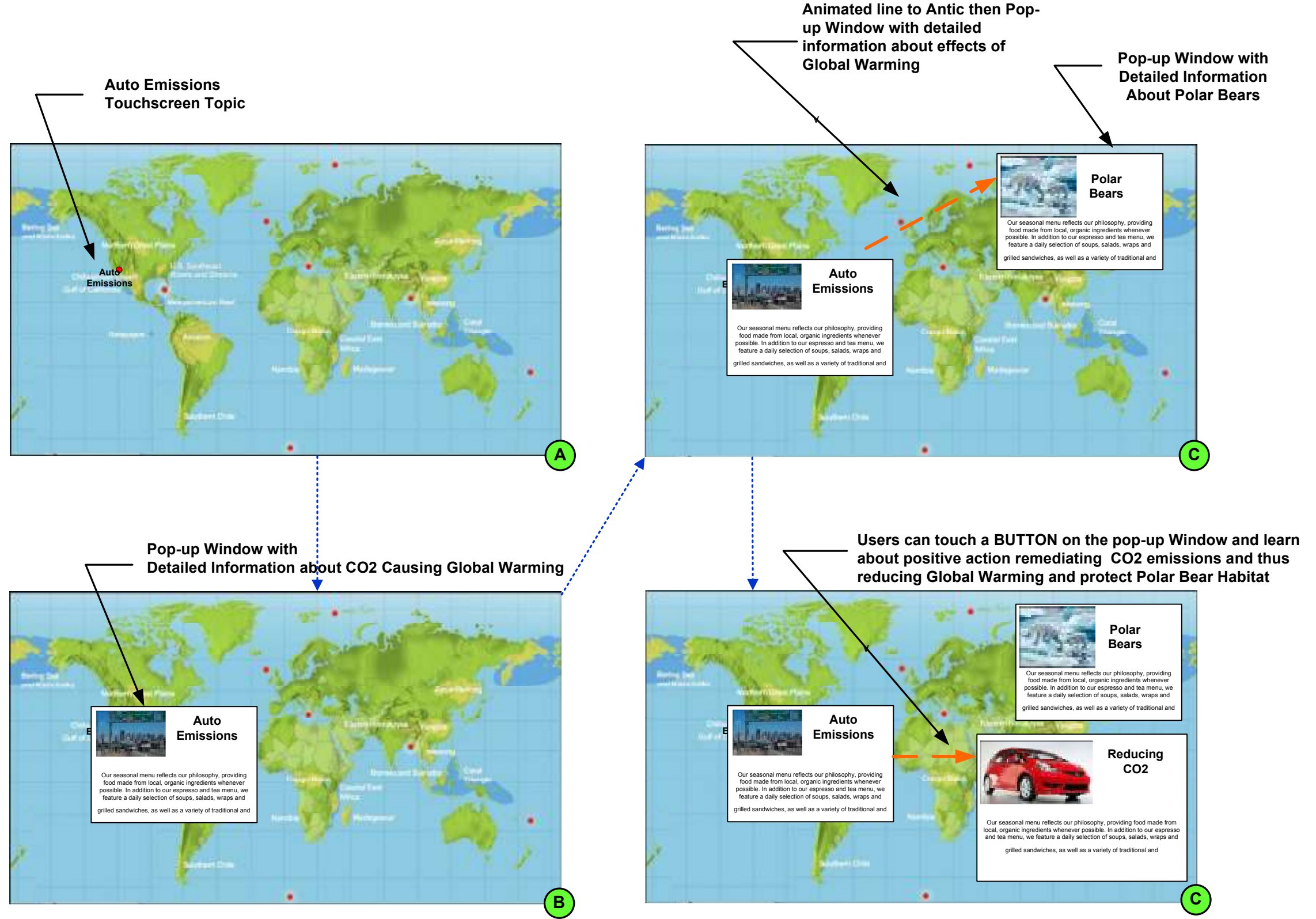
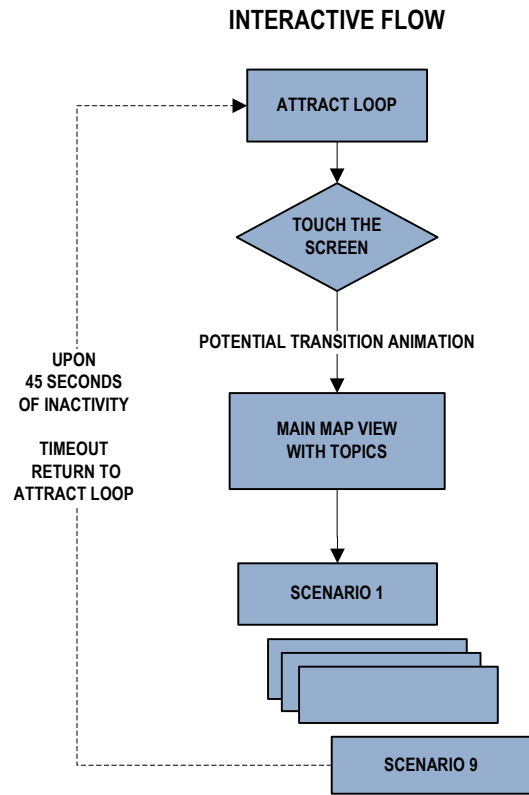
Main Menu

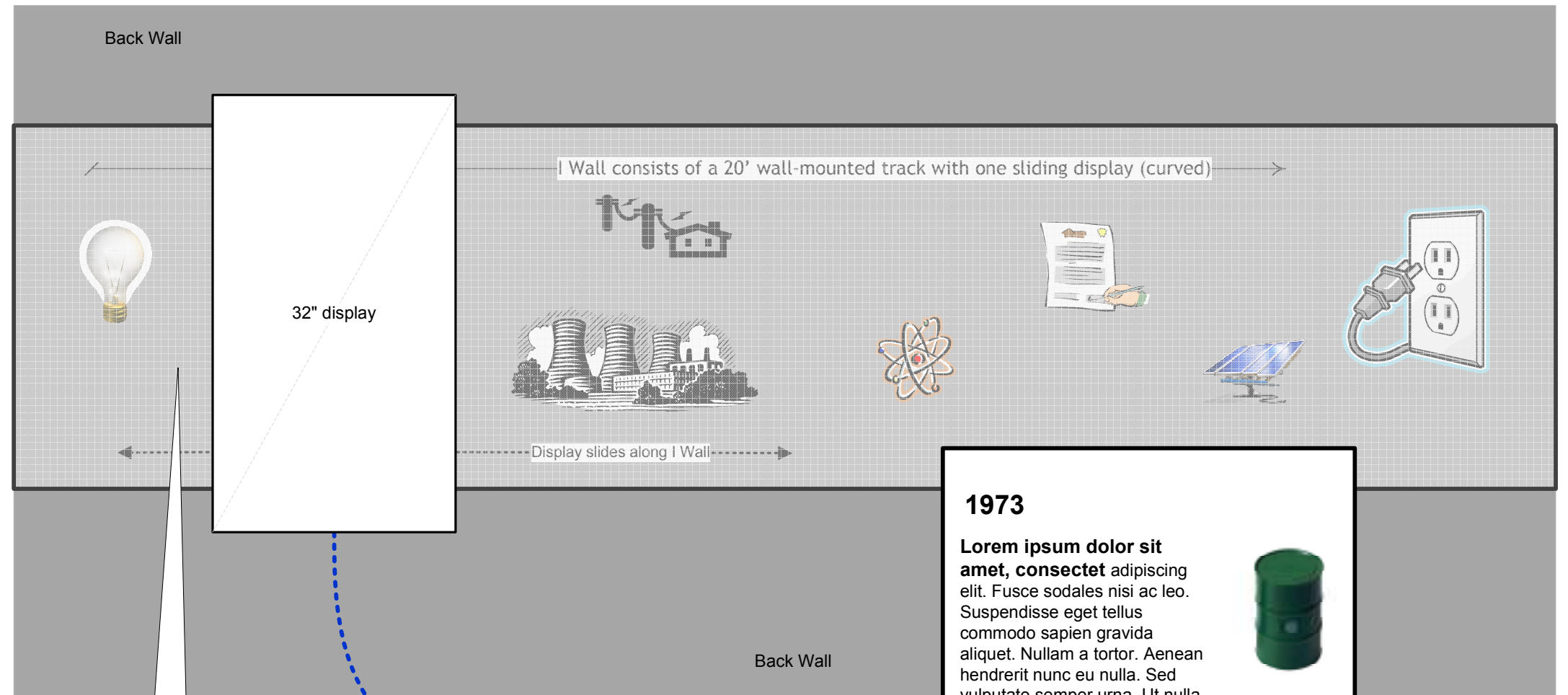
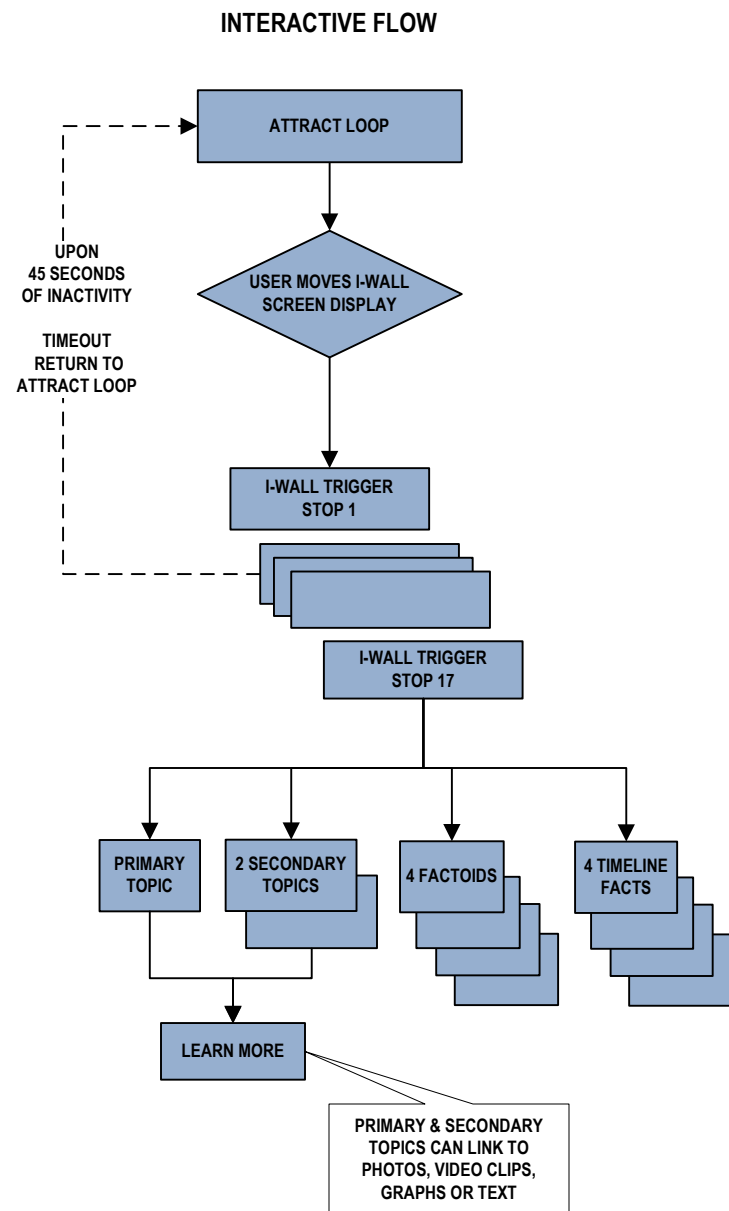
**C**

In this example, the user selects one of three scenarios that have national importance

graphics, audio, video and text are used to explore the choices and environmental impacts of the scenario chosen.

Lorem ipsum dolor sit amet, consectetur adipiscing elit. Aliquam dolor metus, porttitor sit amet, vulputate at, egestas at, nisi. Suspendisse rhoncus justo vel elit. Morbi imperdiet, elit sed fringilla ornare, est risus gravida sapien, sit amet vestibulum lacus quam a quam. Fusce nulla nulla, laoreet vel, aliquet et, pharetra id, diam. Nulla lectus. Ut eu sem nec massa luctus sagittis. Curabitur a felis. Nunc elementum semper velit. U





The I Wall consists of imagery and a graphical timeline that corresponds to what the users sees on the 32" display.

Text, photos, video clips and ambient sound will communicate the evolution of the energy industry, change in lifestyles, and the political environment and public policy.

**There will be 17 different interpretive points (17 different screens)**

**1973**

**Lorem ipsum dolor sit amet, consectetur** adipiscing elit. Fusce sodales nisi ac leo. Suspendisse eget tellus commodo sapien gravida aliquet. Nullam a tortor. Aenean hendrerit nunc eu nulla. Sed vulputate semper urna. Ut nulla mauris, vulputate nec, iaculis id, imperdiet ac, nibh. Vivamus iaculis turpis ac leo. Nulla facilisi. Donec lectus nunc. Nullam a tortor. Aenean hendrerit nunc eu nulla. Sed vulputate semper urna. Ut nulla

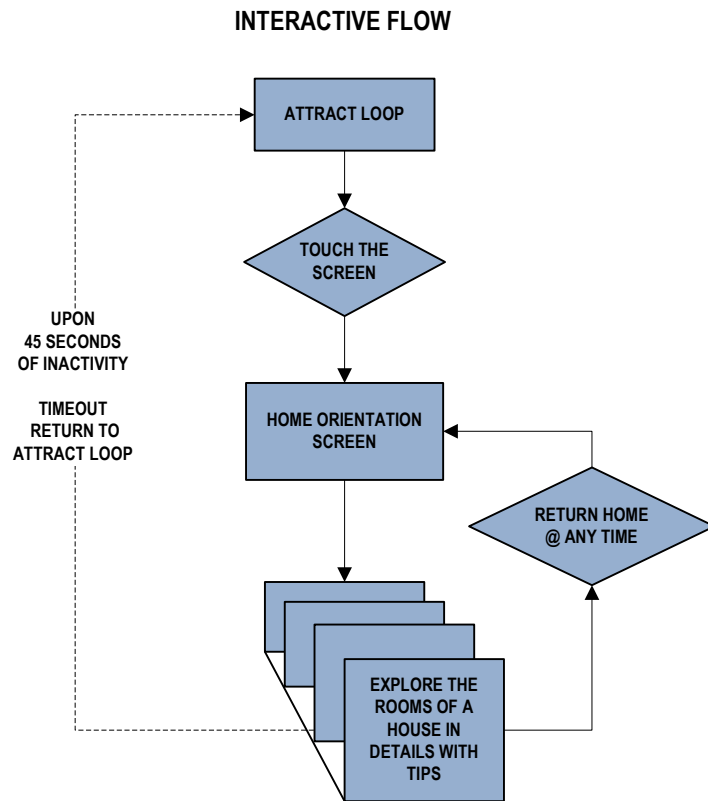



**Lorem ipsum dolor sit amet, consectetur** adipiscing elit. Fusce sodales nisi ac leo.

**Consectetur picing** Lorem ipsum dolor sit amet, consectetur adipiscing elit. Fusce sodales nisi ac leo. Suspendisse eget tellus commodo sapien gravida aliquet. Nullam.



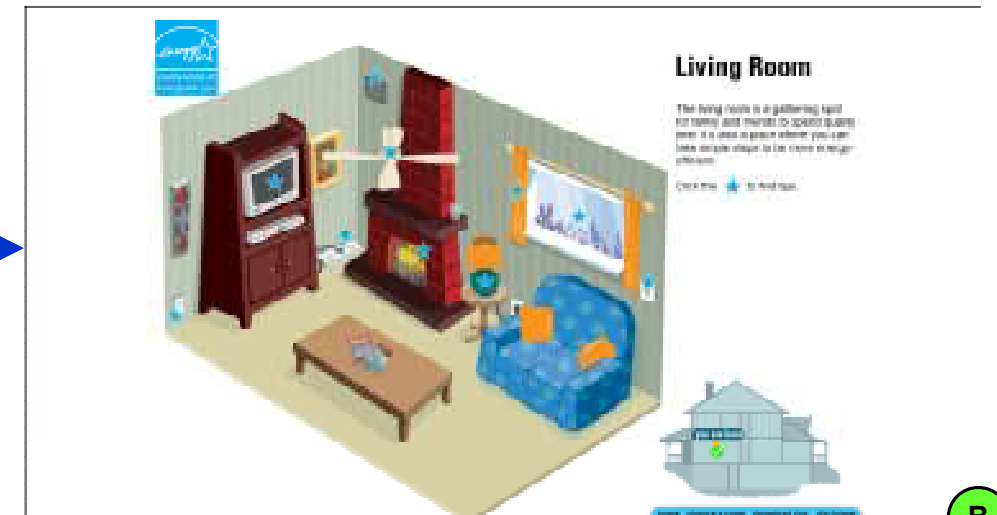
A



A

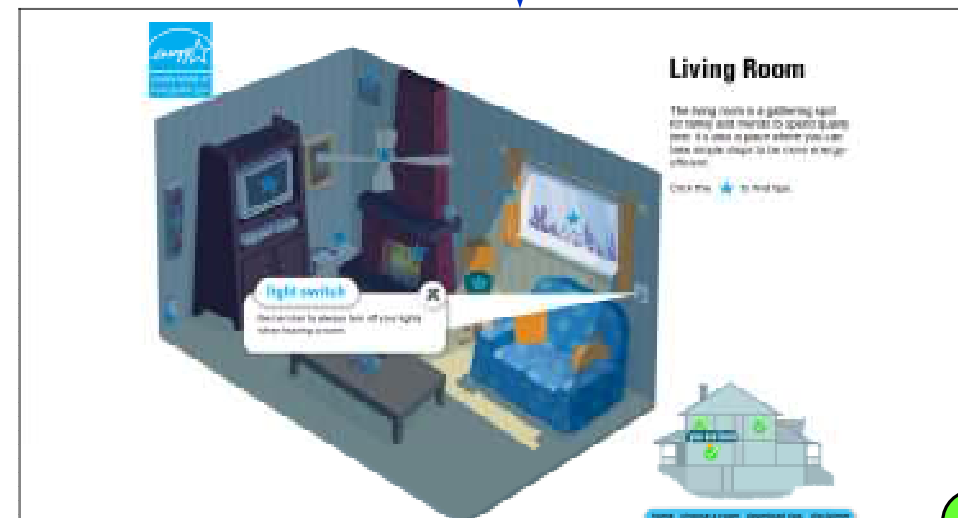
EERC Interactive #MT5 allows the user to explore the electricity usage in a virtual home and learn energy saving tips in each room. Go to: [http://www.energystar.gov/index.cfm?c=products.es\\_at\\_home](http://www.energystar.gov/index.cfm?c=products.es_at_home) Click on Launch ENERGY STAR @ Home

Note that some modifications to the program would need to be made for EERC use



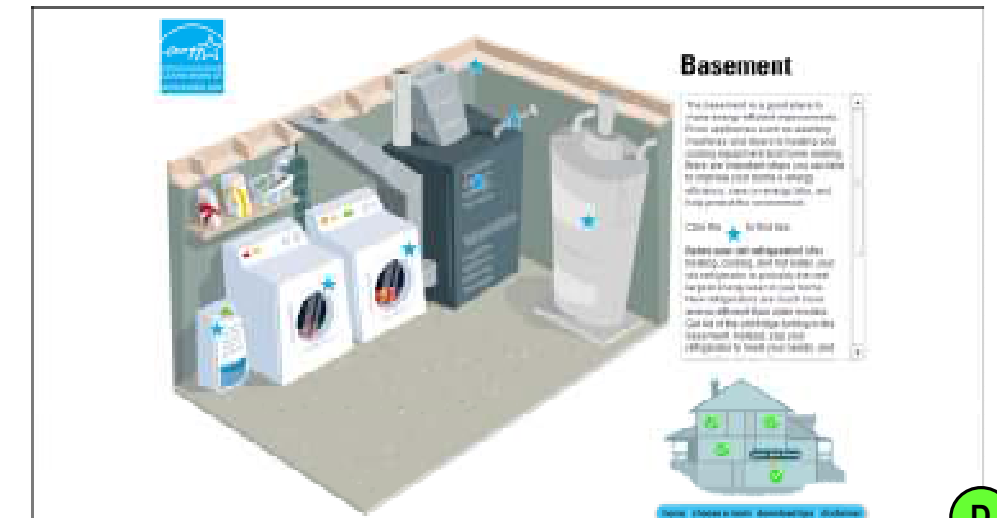
B

The user can explore each room of the house, and can navigate to any other room using the small house in the lower right corner, or by navigating back to the home screen



C

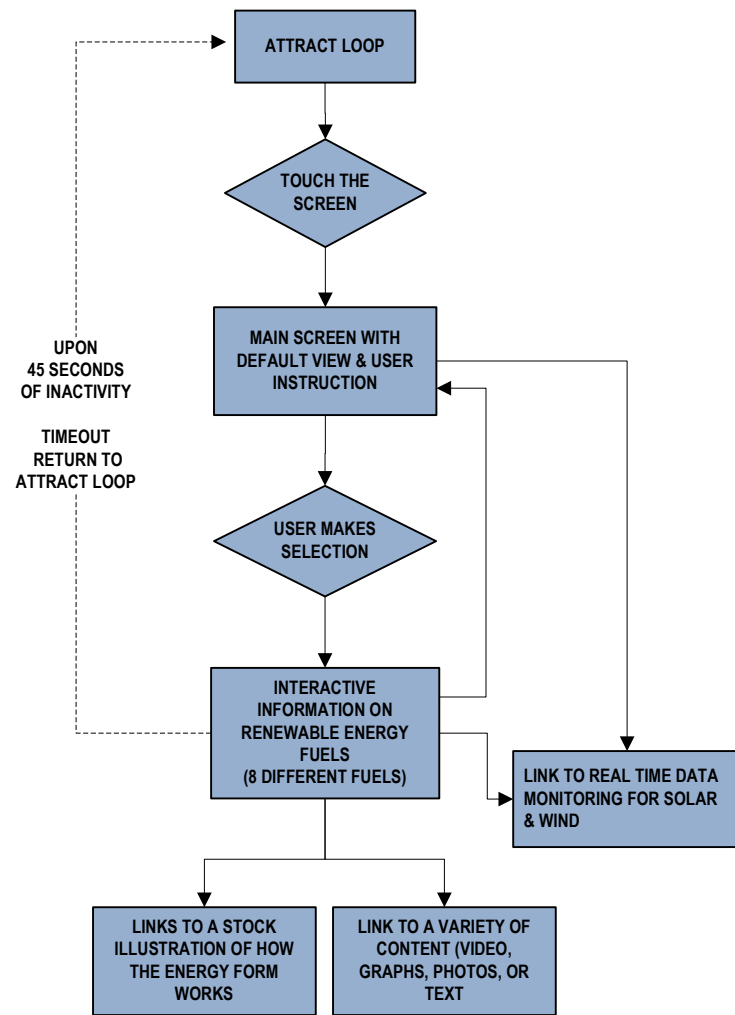
Within each room, tips and factoids are displayed when the user touches a blue star



D

The navigation house widget (lower right corner) keeps track of which rooms you've visited

INTERACTIVE FLOW



### RENEWABLE FUELS

**What is a renewable fuel?**  
 Aenean et erat a odio molestie pretium. Suspendisse eget quam, nullam urna tortor. Proin libero urna, imperdiet eu, fringilla in, auctor vel, mauris. Aenean adipiscing. Quisque ac erat. Sed tellus. Suspendisse at nisl. Proin libero urna, imperdiet eu, fringilla in, auctor vel, mauris. Aenea

**CHOOSE ONE OF THE FUELS BELOW TO LEARN MORE**

fuel image w/ label

fuel image w/ label

fuel image w/ label

fuel image w/ label


fuel image w/ label

fuel image w/ label

fuel image w/ label

fuel image w/ label

### SOLAR POWER



Aenean et erat a odio molestie pretium. Suspendisse eget quam, nullam urna tortor. Proin libero urna, imperdiet eu, fringilla in, auctor vel, mauris. Aenean adipiscing. Quisque ac erat. Sed tellus. Suspendisse at nisl.


Lorem ipsum dolor sit amet, consectetur adipiscing elit. Fusce sodales nisi ac leo. Suspendisse eget tellus commodo sapien gravida aliquet. Nullam a tortor. Aenean hendrerit nunc eu nulla. Sed vulputate semper urna. Ut nulla mauris, vulputate nec, iaculis id, imperdiet ac, nibh. Proin libero urna, imperdiet eu, fringilla in, auctor vel, mauris. Aenean adipiscing. Quisque ac erat. Sed tellus. Suspendisse at nisl. Vivamus iaculis turpis ac leo. Nulla facilisi. Donec lectus nunc, accumsan at, bibendum eu, faucibus ac.

Logo & Menu Instructions

- WIND POWER
- SOLAR**
- HYDRO-ELECTRIC
- GEO-THERMAL
- BIOFUELS
- BIOMASS
- COMPRESSED AIR ENERGY
- WAVE TIDAL

Main Menu

### WIND



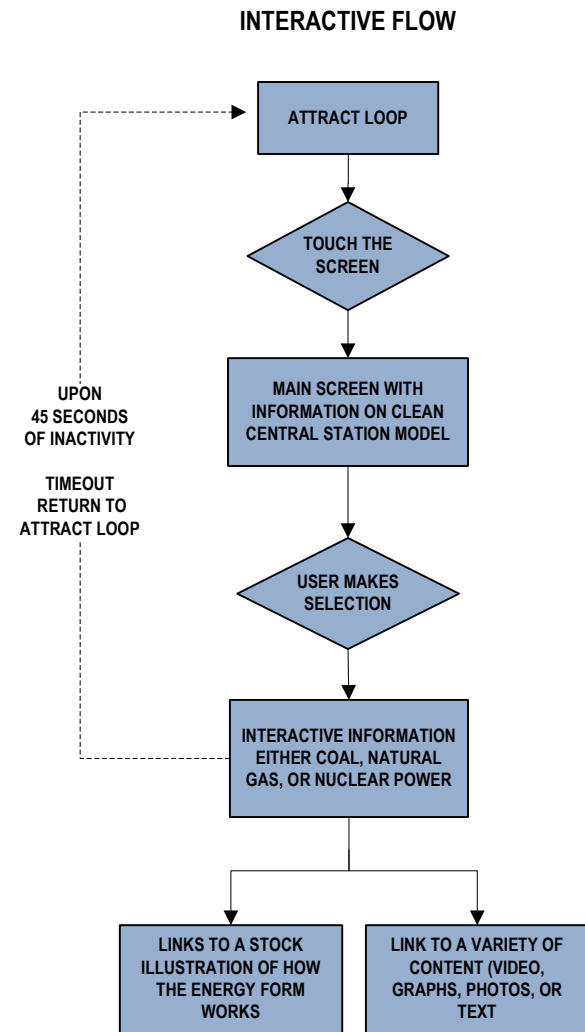
Aenean et erat a odio molestie pretium. Suspendisse eget quam, nullam urna tortor. Proin libero urna, imperdiet eu, fringilla in, auctor vel, mauris. Aenean adipiscing. Quisque ac erat. Sed tellus. Suspendisse at nisl.

Lorem ipsum dolor sit amet, consectetur adipiscing elit. Fusce sodales nisi ac leo. Suspendisse eget tellus commodo sapien gravida aliquet. Nullam a tortor. Aenean hendrerit nunc eu nulla. Sed vulputate semper urna. Ut nulla mauris, vulputate nec, iaculis id, imperdiet ac, nibh. Proin libero urna, imperdiet eu, fringilla in, auctor vel, mauris. Aenean adipiscing. Quisque ac erat. Sed tellus. Suspendisse at nisl. Vivamus iaculis turpis ac leo. Nulla facilisi. Donec lectus nunc, accumsan at, bibendum eu, faucibus ac.

Logo & Menu Instructions

- WIND POWER**
- SOLAR
- HYDRO-ELECTRIC
- GEO-THERMAL
- BIOFUELS
- BIOMASS
- COMPRESSED AIR ENERGY
- WAVE TIDAL

Main Menu



**POWER FROM A CLEAN CENTRAL STATION**

**What is a clean central station?**  
 Aenean et erat a odio molestie pretium. Suspendisse eget quam, nullam urna tortor. Proin libero urna, imperdiet eu, fringilla in, auctor vel, mauris. Aenean adipiscing. Quisque ac erat. Sed tellus. Suspendisse at nisl. Proin libero urna, imperdiet eu, fringilla in, auctor vel, mauris. Aenean adipiscing elit. Fusce sodales nisi ac leo. Suspendisse eget tellus commodo sapien gravida aliquet. Nullam a tortor.

Illustration or animation depicting the clean central station concept.


NEXT

A


**POWER FROM A CLEAN CENTRAL STATION**

Aenean et erat a odio molestie pretium. Suspendisse eget quam, nullam urna tortor. Proin libero urna, imperdiet eu, fringilla in, auctor vel, mauris. Aenean adipiscing. Quisque ac erat. Sed tellus. Suspendisse at nisl.

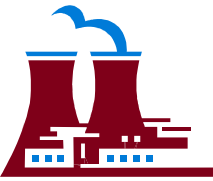
**CHOOSE ONE OF THE FUELS BELOW TO LEARN MORE ABOUT THESE CENTRAL STATION OPTIONS**



'CLEAN' COAL



NATURAL GAS




NUCLEAR POWER

Main Menu

B

**NATURAL GAS**



Aenean et erat a odio molestie pretium. Suspendisse eget quam, nullam urna tortor. Proin libero urna, imperdiet eu, fringilla in, auctor vel, mauris. Aenean adipiscing. Quisque ac erat. Sed tellus. Suspendisse at nisl.

Lorem ipsum dolor sit amet, consectetur adipiscing elit. Fusce sodales nisi ac leo. Suspendisse eget tellus commodo sapien gravida aliquet. Nullam a tortor. Aenean hendrerit nunc eu nulla. Sed vulputate semper urna. Ut nulla mauris, vulputate nec, iaculis id, imperdiet ac, nibh. Proin libero urna, imperdiet eu, fringilla in, auctor vel, mauris. Aenean adipiscing. Quisque ac erat. Sed tellus. Suspendisse at nisl. Vivamus iaculis turpis ac leo. Nulla facilisi. Donec lectus nunc, accumsan at, bibendum eu, faucibus ac.

Logo & Menu Instructions

---

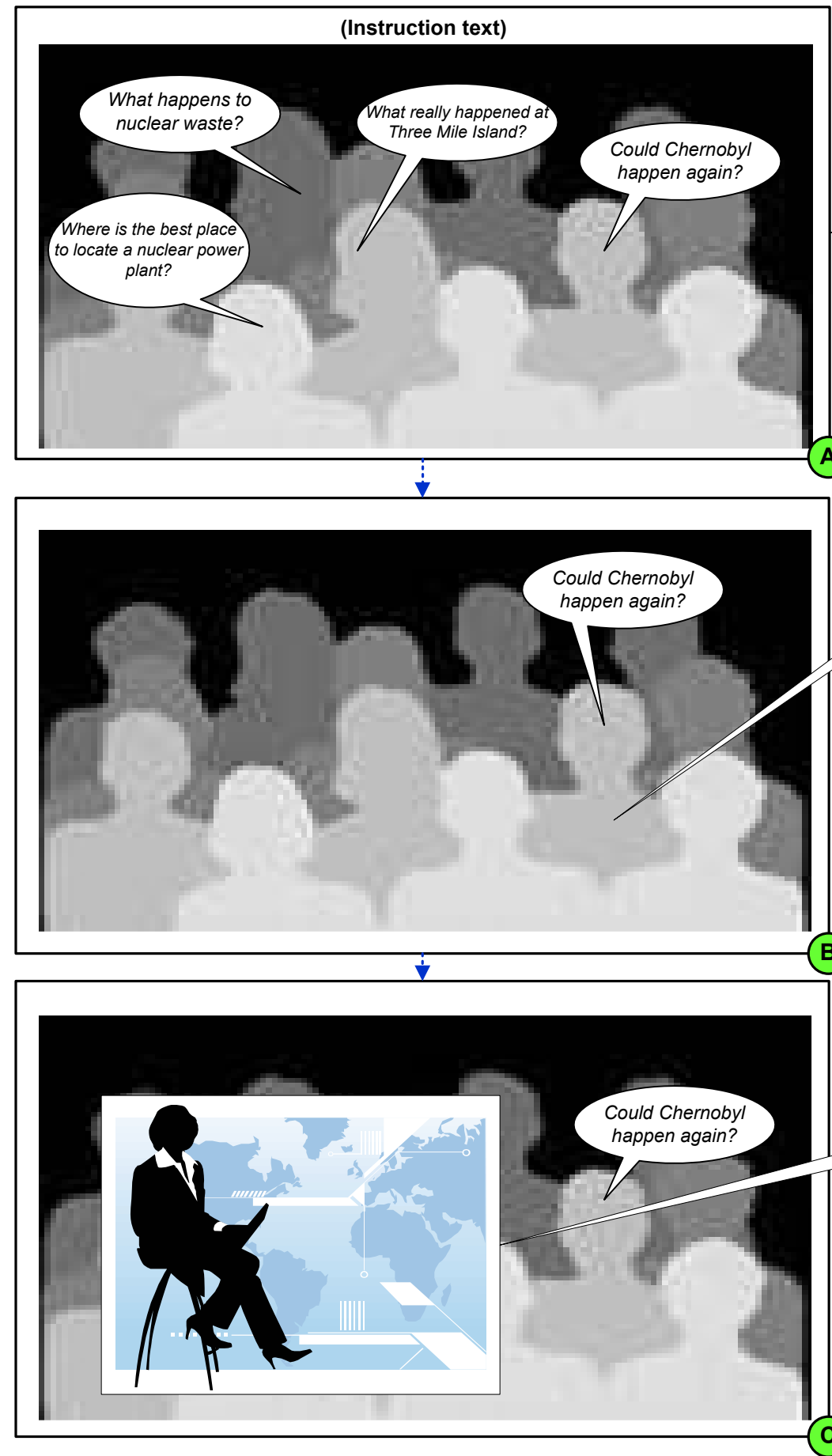
'CLEAN' COAL

**NATURAL GAS**

NUCLEAR POWER

Main Menu

C

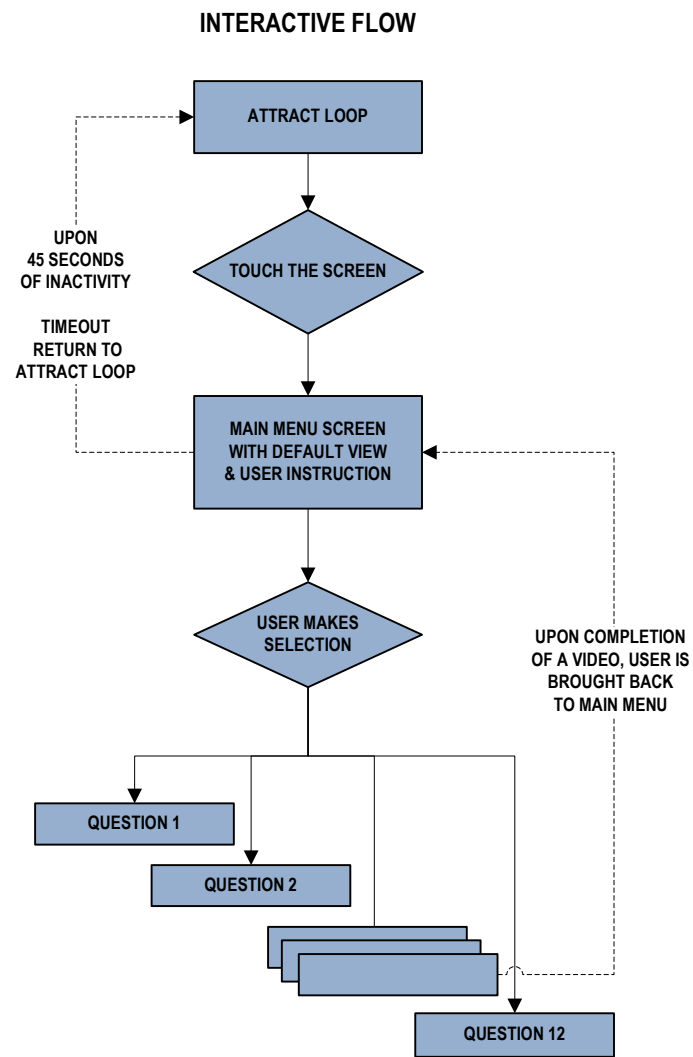


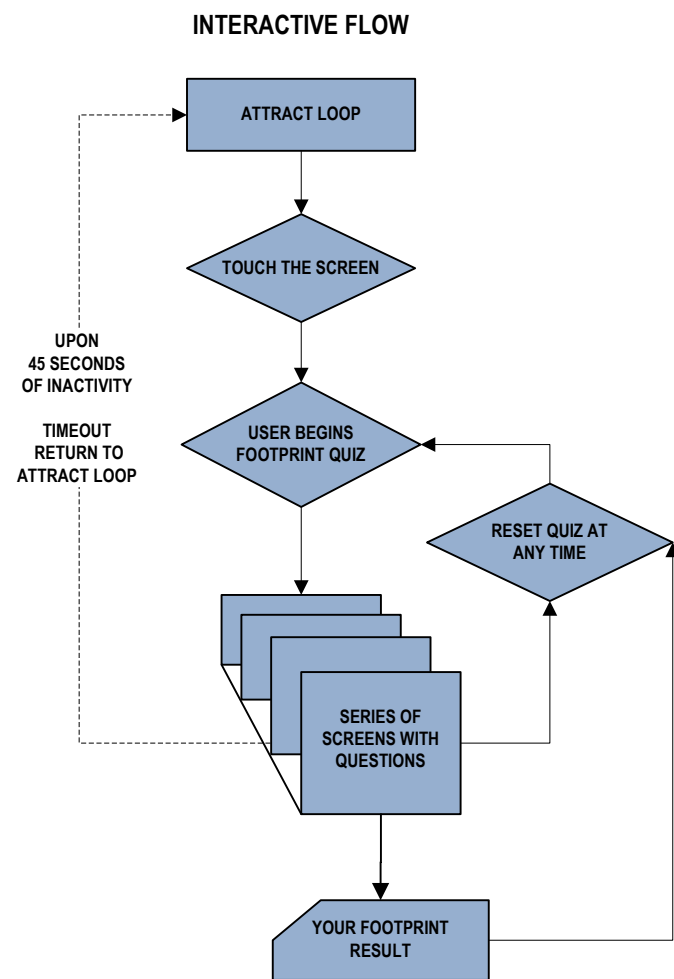
The attract loop will 'tease' the user with various questions brought up in an audience setting.

Touch a person to end the attract loop. Then choose a person with a subsequent question.

Once you choose an audience member and a question, an answer response will be presented in a pop-up window. The answer will be given by an expert.

After the answer concludes, the user is then prompted to choose another question

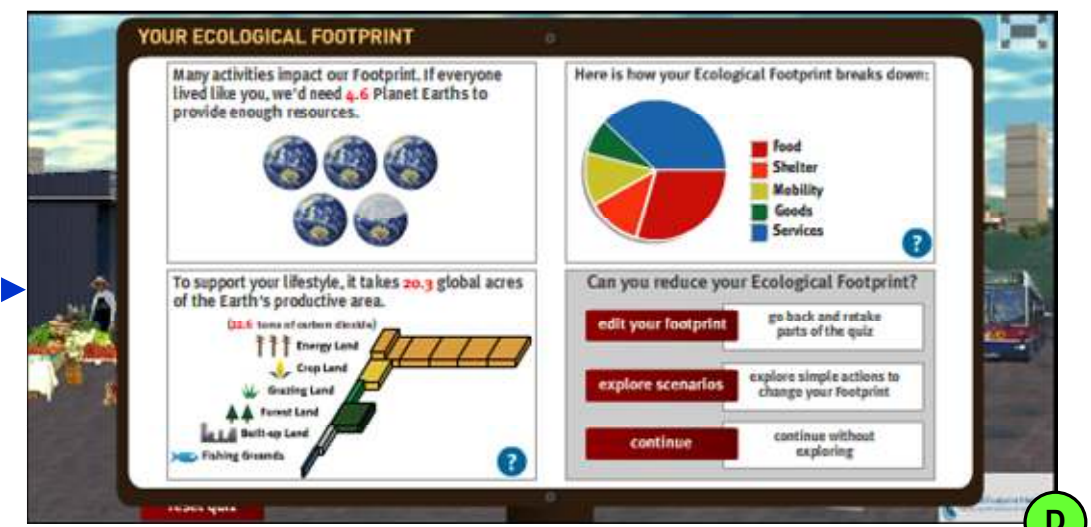
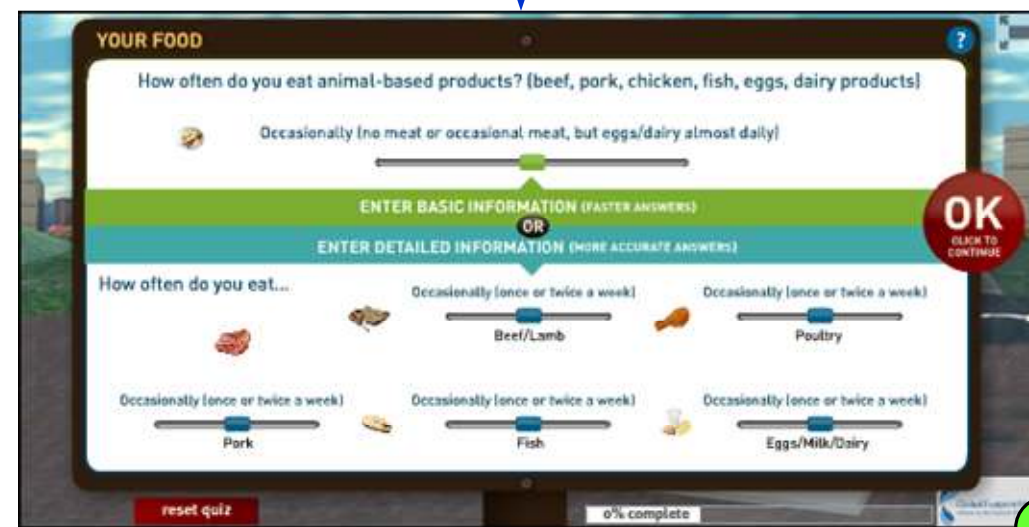




EERC Interactive #MT8 is about measurable accounting of one's environmental footprint, along with suggestions to reduce the footprint. In our research for MT8, we reviewed the Global Footprint Network (GFN) Ecological (or Personal) Footprint Calculator. Go to: <http://www.globalfootprintnetwork.org> Click on FOOTPRINT BASICS > Personal Footprint

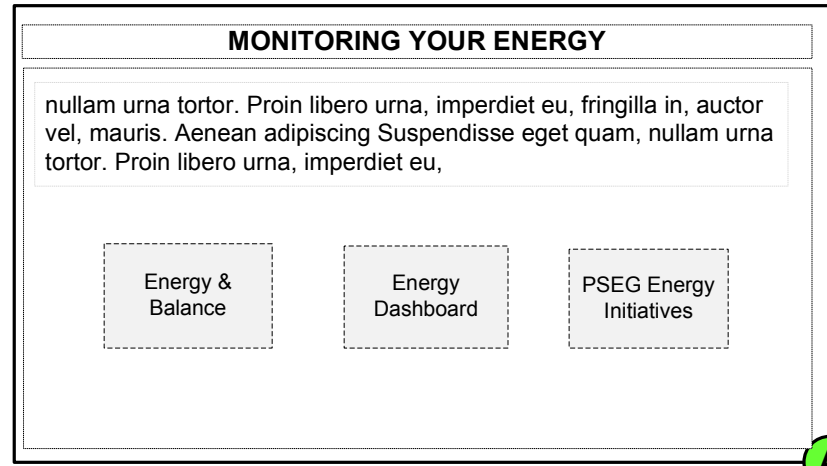
The user is taken through a series of questions about lifestyle using a backdrop of a virtual town. As the questions are answered, elements such as a house, car, public transportation are added to the visual. At any time, the user may start over. Your progress is noted in a % complete bar at the bottom of the screen.

Note that some modifications to the quiz would need to be made for EERC use.

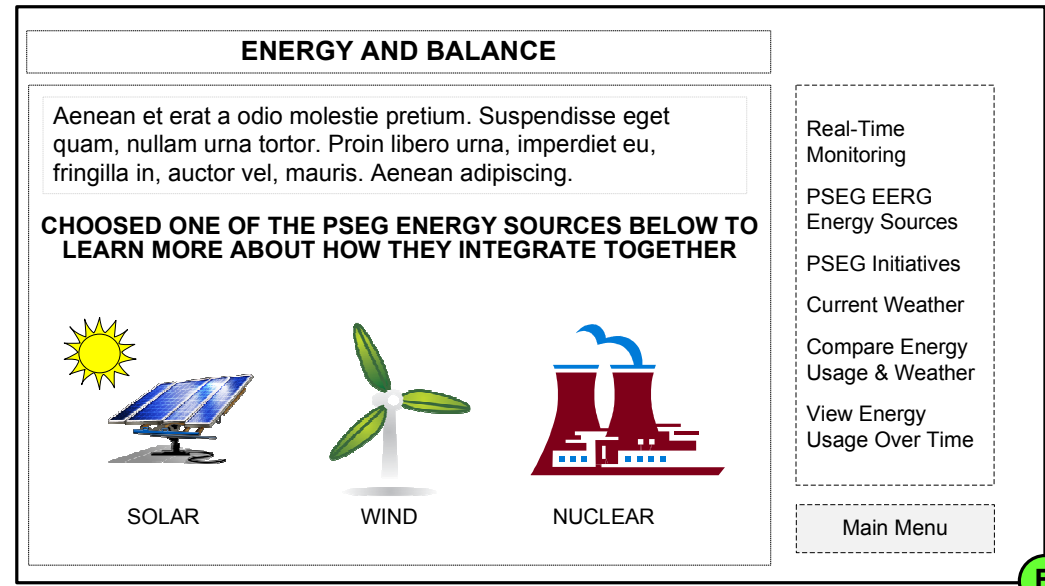


Many of the screens allow the user to choose between entering basic information (faster answers) and entering detailed information (more accurate answers), as in the example above on the "Your Food" screen.

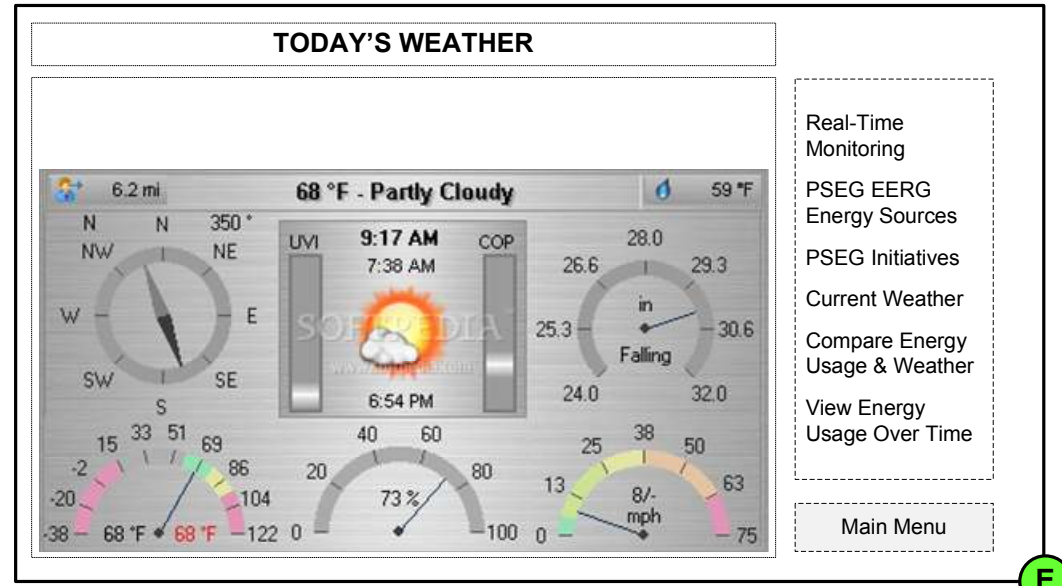
At the conclusion of the quiz, your ecological footprint is presented, in terms of *how many earths we would need if everyone lived like you*. From the screen, the user can return to sections of the quiz to edit entries, or continue to learn how you could adjust your score by changing your habits.



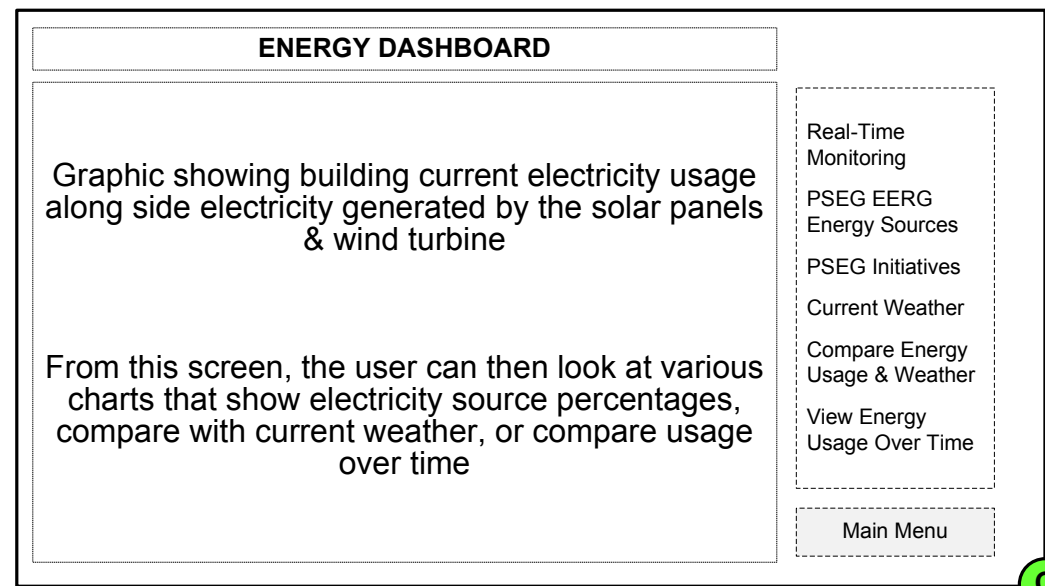
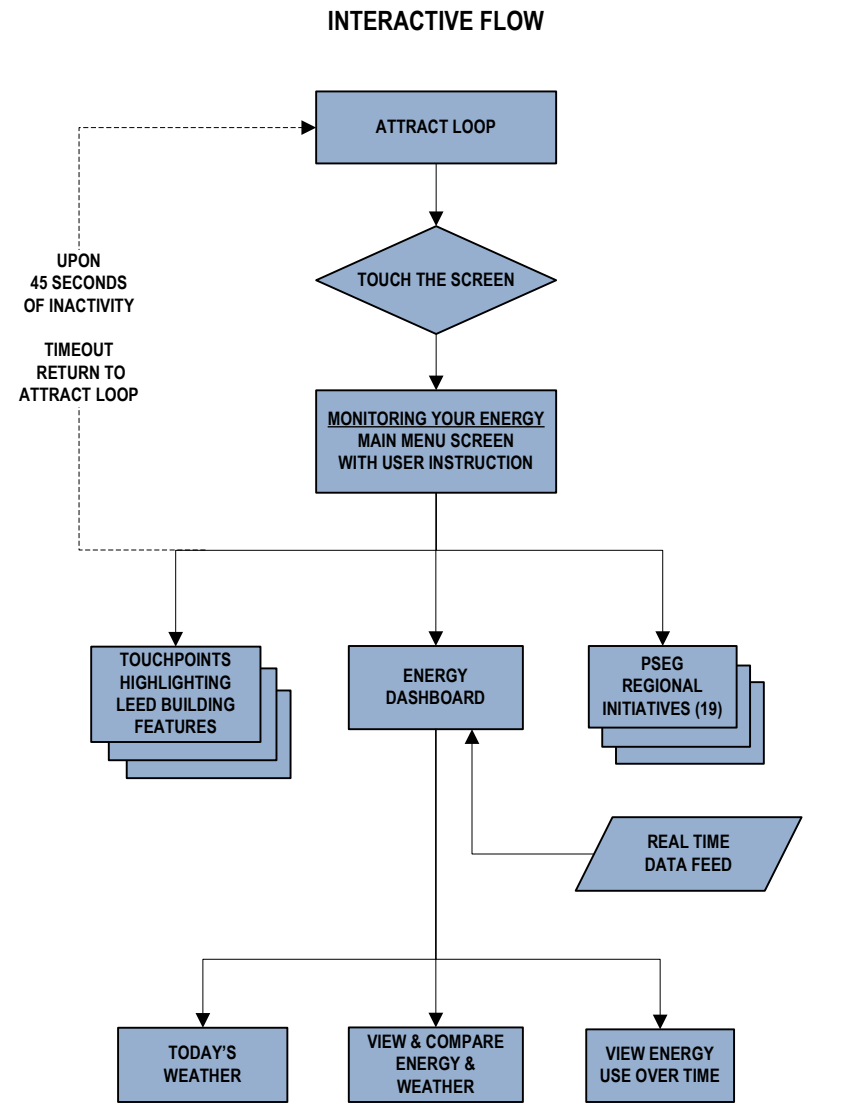
A



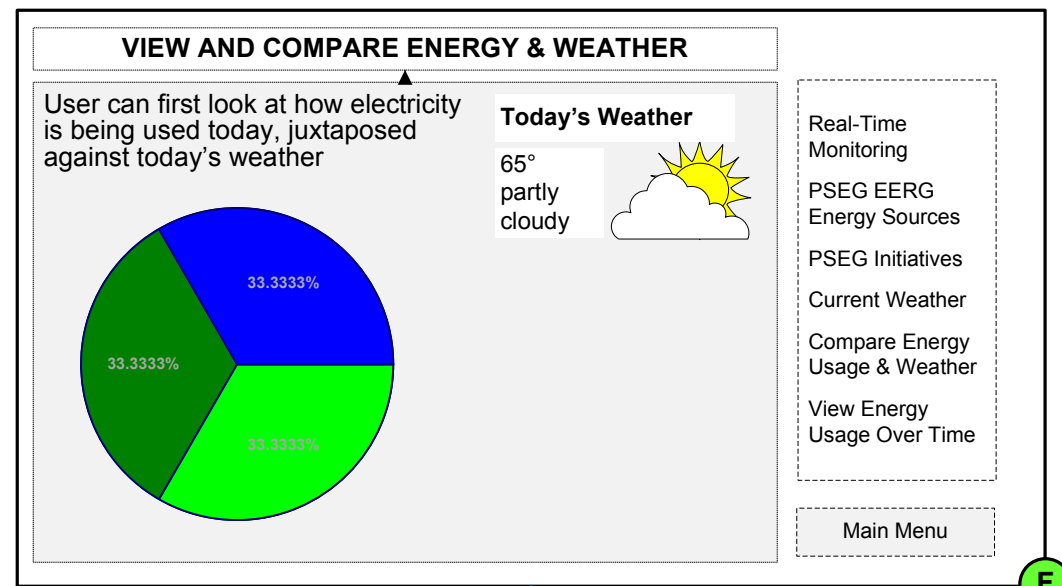
B



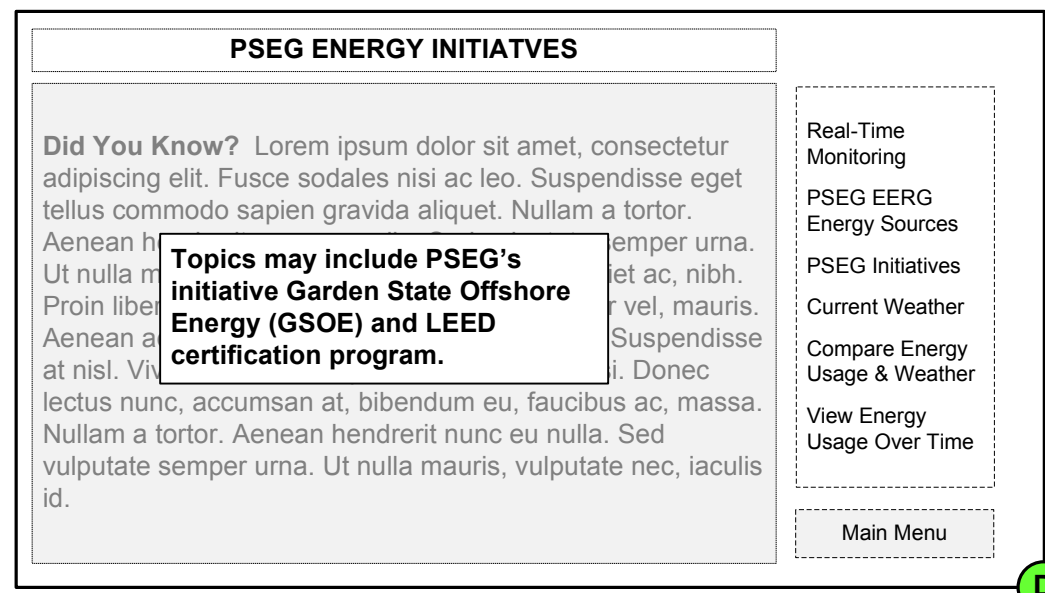
E



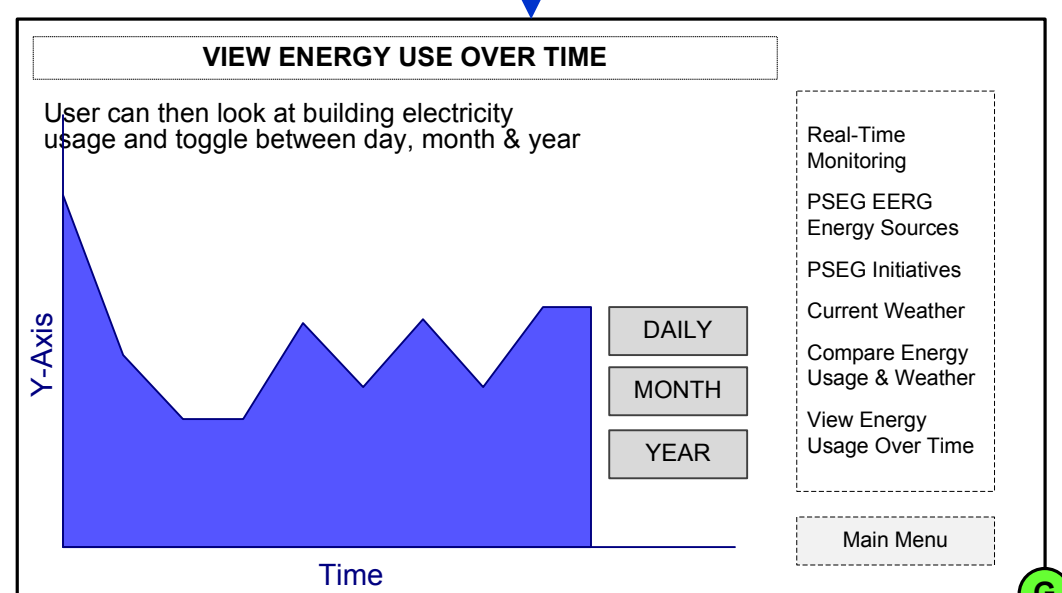
C



F



D



G